







PRODUCT INDEX

The Pirtek range of push-in fittings and pipes provide the ideal connection from compressor receiver to air line service components through to complete ring main and take off points.

| | Series | Page |
|---|------------------------------------|------|
|  | Push-fit System for Compressed Air | 542 |
|  | Plastic Fittings | 544 |
|  | Brass Fittings | 545 |
|  | Connecting and Installation | 546 |

-so simple to use

The Pirtek range of push-in fittings and pipes provide the ideal connection from compressor receiver to air line service components through to complete ring main and take off points.

A compressed air system can be installed quickly and easily, compared with other installation methods, time savings of at least 50% are easily achievable.



No need to prepare threaded pipe or solvent, all the connections can be made with a simple push-in action. The system is then immediately ready for use. Complex systems can be assembled much more rapidly than with traditional methods and because fittings are easy to disconnect, systems can be altered or extended with much reduced production down time.

The fittings are produced in either a tough engineering plastics material or in brass in sizes 12mm to 28mm. They are intended for use with Pirtek nylon pipe but can also be used with copper or aluminium pipe.



1. Cut pipe square



2. Push pipe into fitting



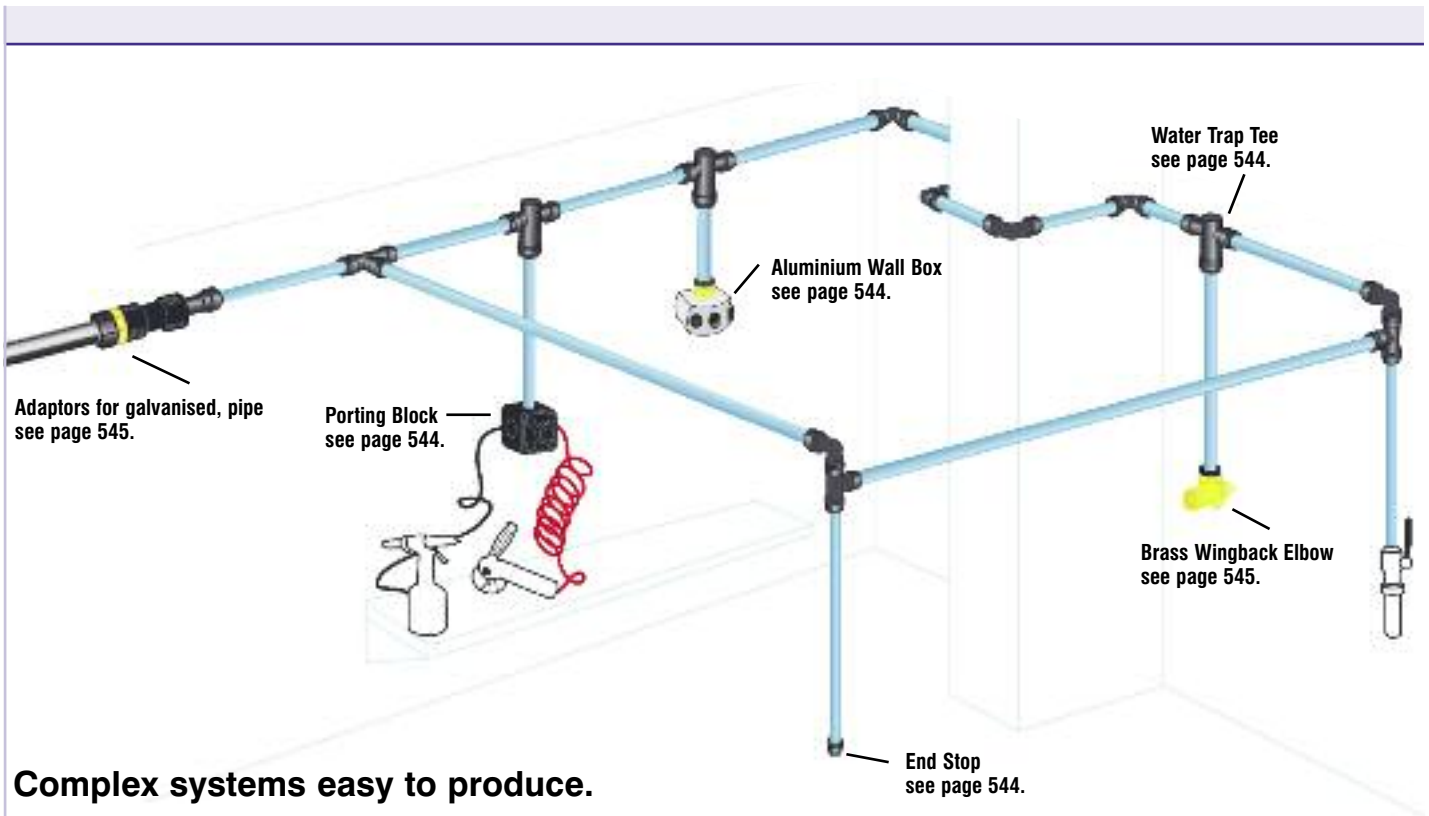
3. Easy to use in confined spaces



4. Complex systems easy to achieve



5. System complete in 2 days



4.
9

Complex systems easy to produce.

- Installation time reduced by at least 50%
- Safe, secure, leakproof
- Easy to alter or extend a system
- Lightweight and easy to handle
- No corrosion, reduced maintenance

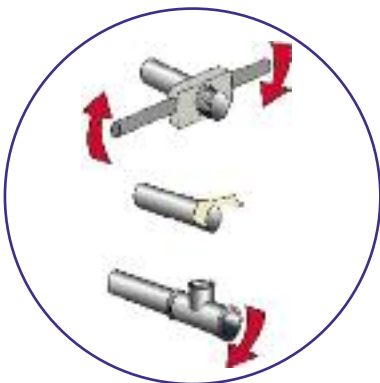
Nylon, Aluminium & Copper Pipe

Whilst we recommend the use of Pirtek Rigid Nylon and Aluminium Pipe, Pirtek fittings can also be used with copper pipe if required.



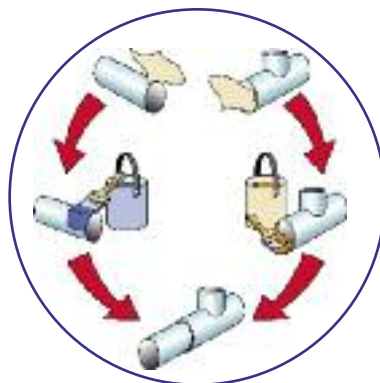
Threaded Steel Tube

A time consuming and difficult process.



Solvent Weld

Long installation time, system needs to be shut down before drying.



The Pirtek Way

One simple movement provides a secure connection system immediately ready for use.



Plastic Fittings

Straight Adaptor



| Part Number | Pipe OD | Thread BSP (ins) |
|------------------|---------|------------------|
| PM011213E | 12 | 3/8 |
| PM011214E | 12 | 1/2 |
| PM011514E | 15 | 1/2 |
| PM011516E | 15 | 3/4 |
| PM011814E | 18 | 1/2 |
| PM012216E | 22 | 3/4 |

Equal Elbow



| Part Number | Pipe OD |
|----------------|---------|
| PM0312E | 12 |
| PM0315E | 15 |
| PM0318E | 18 |
| PM0322E | 22 |
| PM0328E | 28 |

Straight Connector



| Part Number | Pipe OD |
|----------------|---------|
| PM0412E | 12 |
| PM0415E | 15 |
| PM0418E | 18 |
| PM0422E | 22 |
| PM0428E | 28 |

Equal Tee



| Part Number | Pipe OD |
|----------------|---------|
| PM0212E | 12 |
| PM0215E | 15 |
| PM0218E | 18 |
| PM0222E | 22 |
| PM0228E | 28 |

Reducing Tee



| Part Number | Pipe OD Ends | Tube OD Branch |
|-----------------|--------------|----------------|
| PM3018AE | 18 | 15 |
| PM3022AE | 22 | 15 |

Stem Adaptor



Converts push fit end to male thread

| Part Number | Stem OD | Thread BSP (ins) |
|------------------|---------|------------------|
| PM051213E | 12 | 3/8 |
| PM051214E | 12 | 1/2 |
| PM051513E | 15 | 3/8 |
| PM051514E | 15 | 1/2 |
| PM051814E | 18 | 1/2 |
| PM052214E | 22 | 1/2 |
| PM052216E | 22 | 3/4 |

Reducer



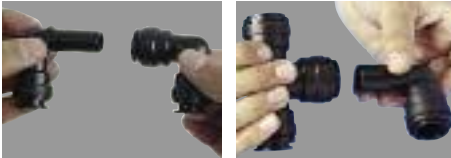
| Part Number | Stem OD | Pipe OD |
|------------------|---------|---------|
| PM061512E | 15 | 12 |
| PM061815E | 18 | 15 |
| PM062215E | 22 | 15 |
| PM062218E | 22 | 18 |
| PM062815E | 28 | 15 |
| PM062822E | 28 | 22 |

Stem Elbow



| Part Number | Pipe OD | Stem OD |
|------------------|---------|---------|
| PM221212E | 12 | 12 |
| PM221515E | 15 | 15 |
| PM221818E | 18 | 18 |
| PM222222E | 22 | 22 |

Designed to simplify pipe connections in restricted spaces, the Swivel Elbow gives an instant swivel fitting so a pipe can be orientated in any direction.



Can be used with an elbow to make 'U' turn connection.

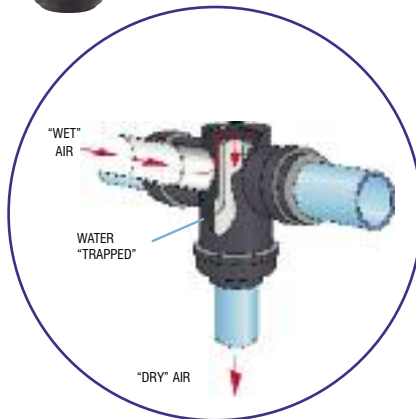
Can be used with a Tee.

Please note a collet cover cannot be used on a Speedfit end assembled with the stem of a 22 mm Stem Elbow.

Water Trap Tee



| Part Number | Pipe OD Ends |
|----------------|--------------|
| PMTT22E | 22 |



The new Water Trap Tee from Pirtek solves the on-going problem of moisture in a compressed air system and provides the easy alternative to the need to install "Swan Necks".

The ingenious inside arrangement of the fitting allows air to flow, with minimum head loss, from the main to take-off point without allowing water to follow. The moisture is retained in the line to be drawn off at some suitable location.

Installation

It is of vital importance for the correct function of the Water Trap Tee that the air distribution system be nearly horizontal and that the outlet port be facing downwards.



Pirtek Adaptability Standard Super Speedfit® products can be coupled together to form integral new fittings.

Porting Block



| Part Number | Size (ins) |
|-----------------|------------|
| JG-L-WSK | 1/2 |

Connections

Aluminium Wall Box



| Part Number | Size (ins) |
|----------------------|------------|
| JGWALLBOX 1/2 | 1/2 |
| JGWALLBOX 3/4 | 3/4 |

1/2 or 3/4 female thread on the top. Both products have 3 x 1/2" female threads on the side.

End Stop



| Part Number | Pipe OD |
|----------------|---------|
| PM4615E | 15 |
| PM4622E | 22 |

The End Stop can be used to provide a permanent connection but because it is easy to disconnect from the pipe it serves a useful purpose as a means of providing a temporary shut off which can be removed at a later date to allow a system to be extended or modified.

U-bend



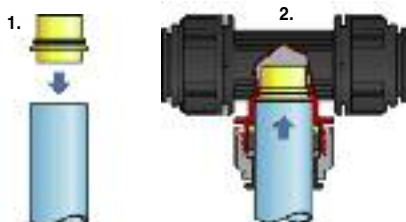
| Part Number | Tube OD |
|----------------|---------|
| PMUB15E | 15 |



Pirtek fittings make complex systems easy to achieve.

Water Trap Tee Convertor

| Part Number | Size |
|--------------|------|
| WTC28 | 28 |



The Water Trap Tee Convertor is a simple convenient way of converting a standard Pirtek 28mm Tee to a Water Trap Tee.

This will stop condensing water entering the vertical take off spur.

The air supply needs to be installed with the correct fall and water drain points regularly vented.

To Assemble

Use either Pirtek 28mm Nylon Pipe or 28mm Aluminium Pipe. The pipe to be cut square and be free of burrs.

Press the shorter spigot into the pipe. The fit on the pipe will be loose, this will not affect the function.

Push the pipe and convertor up to the pipe stop of the centre leg of the tee.

Turn the screw cap approx 1/4 turn to lock the pipe in position.

Brass Wingback Elbow

| Part Number | Pipe OD | Thread |
|---------------|---------|--------|
| PM15WB | 15 | ½ BSP |
| PM22WB | 22 | ¾ BSP |



Brass Straight Adaptor

| Part Number | Pipe OD | Thread |
|------------------|---------|--------|
| MM011504N | 15 | ½ BSPT |
| MM012206N | 22 | ¾ BSPT |
| MM012808N | 28 | 1 BSPT |



Male Brass Stem Adaptor

| Part Number | Stem OD | Thread |
|------------------|---------|--------|
| MM051504N | 15 | ½ BSPT |
| MM052206N | 22 | ¾ BSPT |
| MM052818N | 28 | 1 BSP |
| MM052226N | 22 | ¾ NPT |
| MM052228N | 22 | 1 NPT |
| MM052828N | 28 | 1 NPT |



Converts push fit end to male thread.

Female Brass Stem Adaptor

| Part Number | Stem OD | Thread |
|---------------------|---------|--------|
| MM501514N 15 | 15 | ½ BSP |
| MM502216N 22 | 22 | ¾ BSP |



Converts push fit end to female thread.

Easy to extend a galvanised system

Pirtek fittings and pipe can form a stand alone system or be used to modify or extend an existing galvanised system.



Using a Straight Adaptor.



Using a Female Stem Adaptor.



Using a Male Stem Adaptor.

Accessories

Release Aid

| Part Number | Pipe OD |
|-------------|---------|
| 15RA | 15 |
| 22RA | 22 |



The action of pressure in a system could increase the grip of the collet. The Release Aid allows a firmer grip on the collet while removing the pipe.

Collet Covers

| Part Number | Pipe OD | Colours |
|----------------|---------|---------|
| PM1912E | 12 | BLACK |
| PM1915E | 15 | BLACK |
| PM1918E | 18 | BLACK |
| PM1922E | 22 | BLACK |



Collet Covers prevent accidental removal or tampering with piping. The pipe can be inserted with the Collet Cover already attached to the fitting or the cover can slide into position afterwards.

We recommend covers be fitted when pipework is hidden inside walls, ceilings etc.

Collet Covers can be removed to allow the pipe to be disconnected as and when required.

Plug

| Part Number | Stem OD | Colour |
|----------------|---------|--------|
| PM0812R | 12 | RED |
| PM0815E | 15 | BLACK |
| PM0818E | 18 | BLACK |
| PM0822E | 22 | BLACK |
| PM0828E | 28 | BLACK |



Pipe Cutter

| Part Number |
|-------------|
| JGTS |



For up to and including 22mm pipe

Heavy Duty Pipe Cutter

| Part Number |
|-----------------------|
| HDC |
| HDC BLADE ONLY |



For up to and including 28mm pipe

Pipe Clips

| Part Number | Pipe OD | Colours |
|--------------|---------|---------|
| PC15E | 15 | BLACK |
| PC22E | 22 | BLACK |
| PC28E | 28 | BLACK |



Pipe Spacers

| Part Number | Colours |
|-------------|---------|
| PCSE | BLACK |



The Pirtek System is light and easy to handle.

Connecting and Installation



Rigid Nylon Pipe

Pirtek's new rigid unplasticised nylon 12 pipe is especially suitable for compressed air situations. It is offered in BLUE in packs of 20 x 3 metre lengths (28mm in packs of 10 lengths).

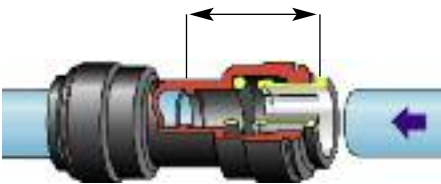
It can easily be cut to length using Pirtek pipe cutters and is capable of withstanding temperatures and pressures well in excess of normal working conditions.

Relevant sizes are to DIN 73378

| Part Number | Size OD - ID (mm) | Pack Quantity |
|-------------------------|----------------------|------------------|
| PA-RM1209-3M-20B | 12 x 9 | 20 |
| PA-RM1512-3M-20B | 15 x 12 | 20 |
| PA-RM1814-3M-20B | 18 x 14 | 20 |
| PA-RM2218-3M-20B | 22 x 18 | 20 |
| PA-RM2823-3M-10B | 28 x 23 | 10 |

Pipe Stop Distances

Stops are located at the following distances from the end of the fitting.

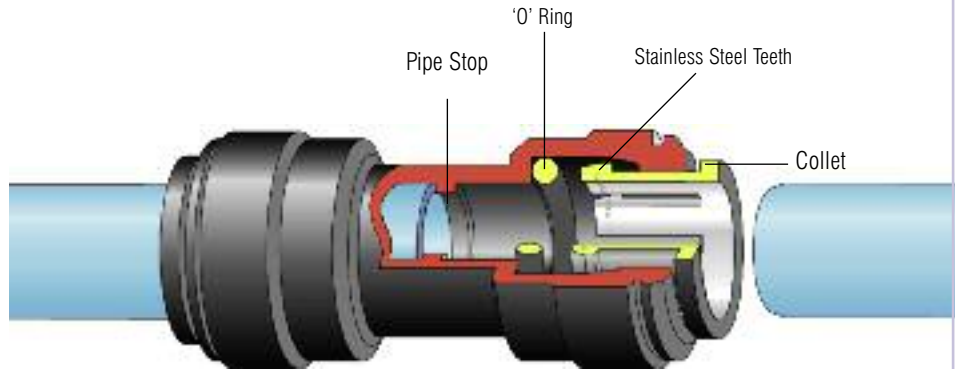


A line is moulded onto the fitting to show the position of the pipe stop.



| Size Stop | Distances |
|-----------|-----------|
| 12mm | 26mm |
| 15mm | 30mm |
| 22mm | 35mm |
| 28mm | 44mm |

The Pirtek Push-in Fitting has a collet (gripper) with stainless steel teeth which hold the pipe firmly in position and an 'O' ring to provide a permanent leak proof seal.



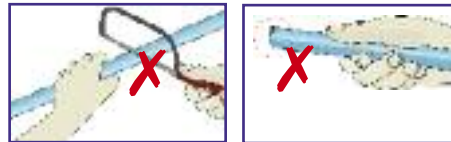
Three easy steps

Fittings and pipe should be kept clean and undamaged before use.



Cut the pipe square.

We recommend the use of the Pirtek Pipe Cutter.



DO NOT use a hacksaw. To avoid damage to the 'O' ring remove burrs and sharp edges.



Push up to pipe stop.

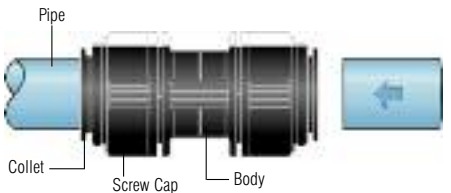


Pull to check secure. Test the system before use.



To disconnect, ensure the system is depressurised. Push the collet towards the fitting and remove the pipe. The fitting can be reused.

28mm Fittings



28mm fittings also have a collet with stainless steel teeth and an 'O' ring.



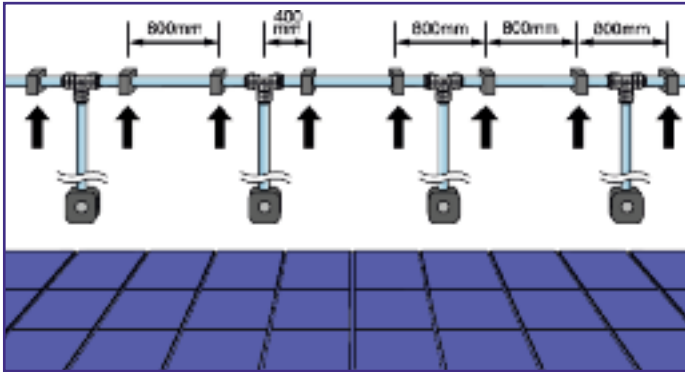
After inserting the pipe, the screw cap is turned approx 1/4 turn. This locks the collet in place and reduces lateral and sideways movement of the pipe.



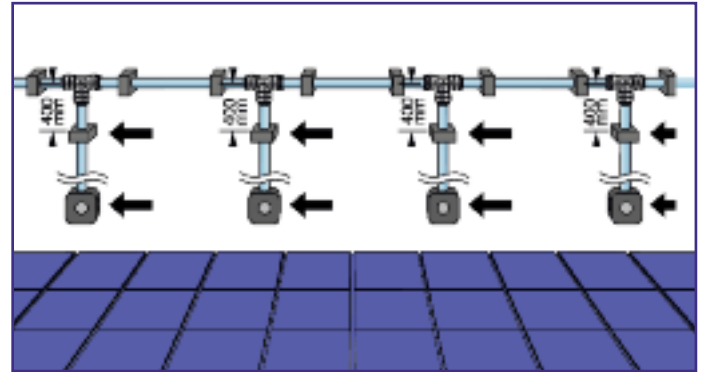
To disconnect, turn the screw cap 1/4 turn, push in the collet and remove the pipe. The fitting and pipe can be reused.

Installing a system

When installing a compressed air system, it is advisable to first attach only the horizontal pipe clips and only attach the clips to the vertical pipes after a small amount of pressure has been applied to the system. This will ensure that the vertical pipes have positioned themselves correctly before they are clipped.

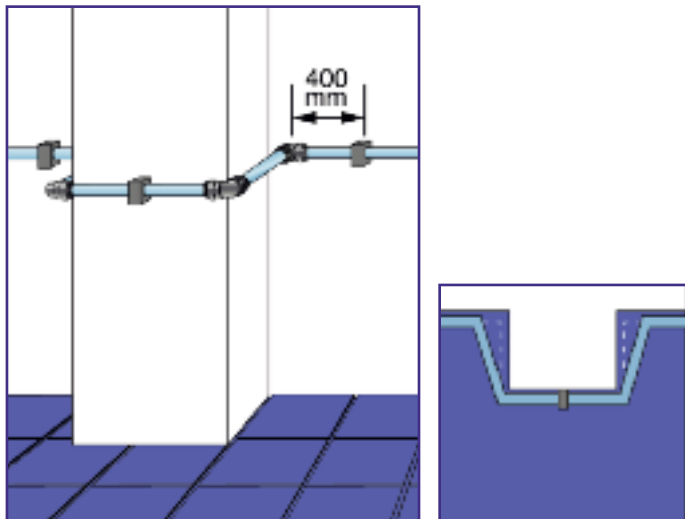


Phase 1: System without pressure

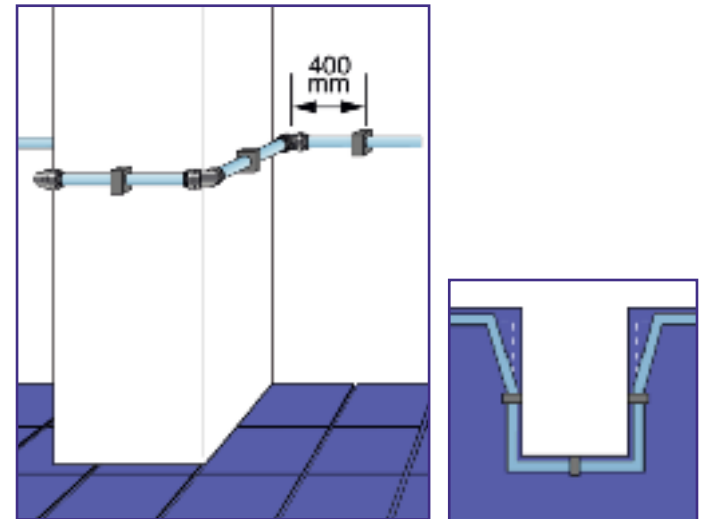


Phase 2: System with pressure

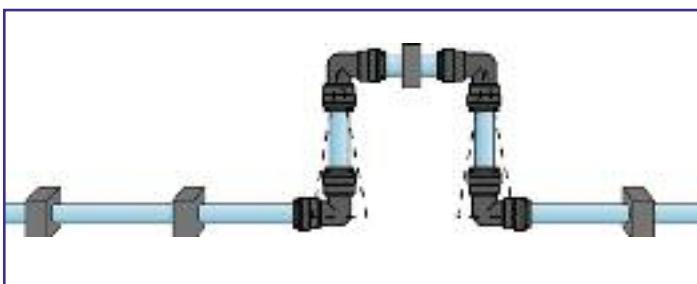
When installing around a column or pillar, maintain a distance of approximately 10cm between the wall and the pipe. Always maintain a distance of 400mm between the fittings and the pipe clip.



Column/Pillar smaller than 1 metre



Column/Pillar larger than 1 metre



On long pipe runs, it is advisable to install an expansion bend, as shown in the diagram.

Note: All compressed air systems should be equipped with an air line water trap, we recommend our PMTT22E Water Trap Tee for this purpose (as shown on page 544 of this catalogue).