



PRODUCT INDEX

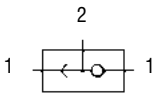
| | Series | Page |
|---------------------|---|------|
| Automatic Valves | SCS, VNR, VSC and VSO | 518 |
| Blocking Valves | VBO and VBU | 519 |
| Flow Control Valves | SCU, MCU, SVU, MVU SCO and MCO | 520 |
| Flow Control Valves | GSCU, GMCU, GSVU GSCO and GMCO | 522 |
| Flow Control Valves | TMCU, TMVU and TMCO | 523 |
| Flow Control Valves | 28 | 524 |
| Silencers | 2901, 2903, 2921, 2938 2939,SP and RSW | 525 |

Series SCS, VNR, VSC and VSO Automatic Valves

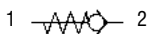
Unidirectional valves VNR
 Quick exhaust valves VSC - VSO
 Shuttle valve SCS
 Connections: M5, 1/8, 1/4, 1/2

ø4mm cartridge

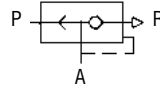
4.
7



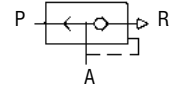
| |
|-------------------|
| Shuttle Valve |
| SCS-668-06 |
| |



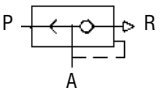
| |
|--------------------|
| Non Return Valve |
| VNR-205-M5 |
| VNR-210-1/8 |
| VNR-843-07 |



| |
|---------------------|
| Quick Exhaust Valve |
| VS0-425-M5 |
| |

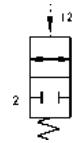
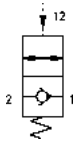


| |
|---------------------|
| Quick Exhaust Valve |
| VS0-426-04 |
| |



| |
|---------------------|
| Quick Exhaust Valve |
| VSC 588-1/8 |
| VSC 544-1/4 |
| VSC 522-1/2 |

Unidirectional and bidirectional 1/8, 1/4, 3/8
Nominal diameters 5,5 - 8 - 11.



| Unidirectional | |
|----------------|-----|
| VBU | 1/8 |
| VBU | 1/4 |
| VBU | 3/8 |

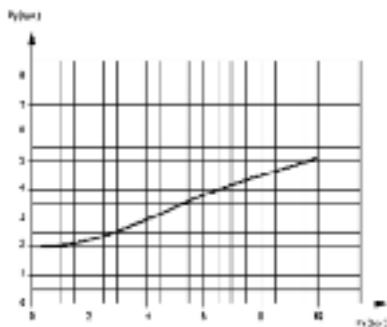
| Bidirectional | |
|---------------|-----|
| VBO | 1/8 |
| VBO | 1/4 |
| VBO | 3/8 |

CODING EXAMPLE

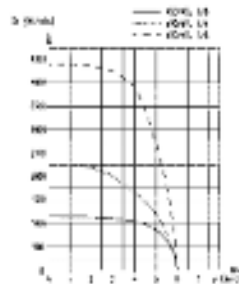
| | | | |
|-----------|------------|------------|--|
| VB | U | - | 1/8 |
| VB | SERIES: VB | U | VERSIONS: U = unidirectional O = bidirectional |
| | | 1/8 | CONNECTIONS: 1/8, 1/4, 3/8 |

4.
7

Unidirectional and Bidirectional Blocking Valves

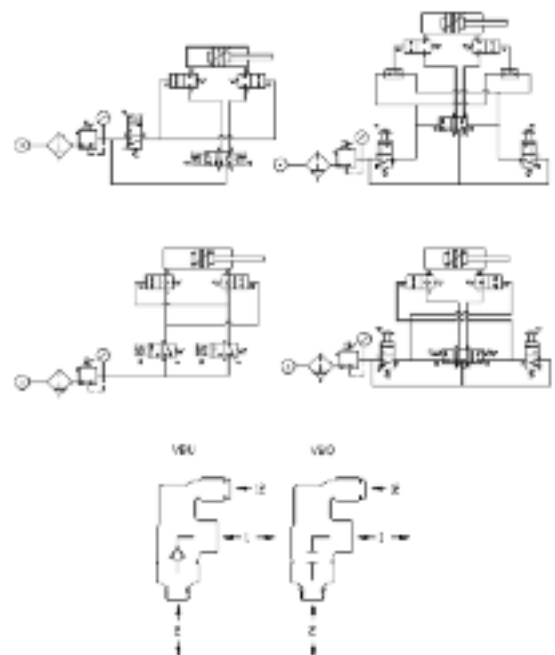


PILOT PRESSURE: This diagram shows the relation between working pressure (Px) and pilot pressure required in order to operate the valve (Py).
The opening pressure of the unidirectional valve is 0,3 bar.



FLOW RATE
Flow Q (NI/min.)
N.B.: Q is determined with an inlet pressure of 6 bar.

Application Schemes

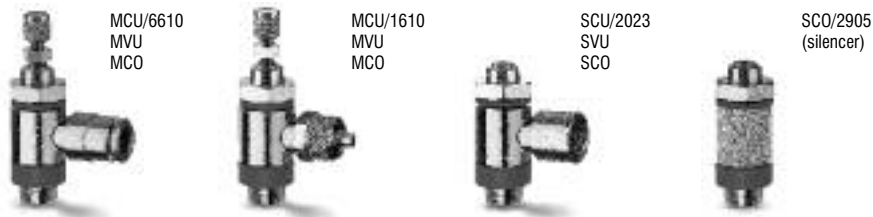


Series SCU, MCU, SVU, MVU, SCO, MCO Flow Control Valves

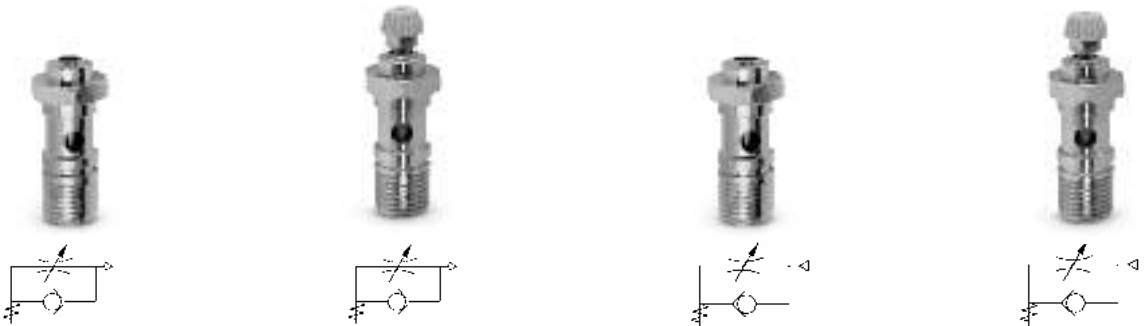
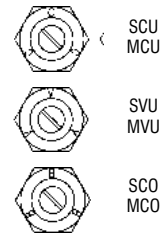
Unidirectional and bidirectional
banjo flow controllers
Connections: M5, 1/8, 1/4, 3/8, 1/2

4.
7

AVAILABLE BANJO FLOW CONTROLLERS



IDENTIFICATION OF DIFFERENT TYPES



Unidirectional Cylinder Mount

SCU 602 - M5

SCU 604 - 1/8

SCU 606 - 1/4

SCU 608 - 3/8

Ring Connector required see page 525

Unidirectional Cylinder Mount

MCU 702 - M5

MCU 704 - 1/8

MCU 706 - 1/4

MCU 708 - 3/8

Ring Connector required see page 525

Unidirectional Valve Mount

SVU 602 - M5

SVU 604 - 1/8

SVU 606 - 1/4

Ring Connector required see page 525

Unidirectional Valve Mount

MVU 702 - M5

MVU 704 - 1/8

MVU 706 - 1/4

Ring Connector required see page 525

Bidirectional

SCO 602 - M5

SCO 604 - 1/8

SCO 606 - 1/4

Ring Connector required see page 525

Bidirectional

MCO 702 - M5

MCO 704 - 1/8

MCO 706 - 1/4

Ring Connector required see page 525

Unidirectional Cylinder Mount

SCU 610 - 1/2

Pre-assembled with ring connector

Unidirectional Cylinder Mount

MCU 710 - 1/2

Pre-assembled with ring connector

AUTOMATIC VALVES

Series SCU, MCU, SVU, MVU, SCO, MCO Flow Control Valves - continued



Unidirectional Valve Mount
SVU 610 - 1/2
Pre-assembled with ring connector



Unidirectional Valve Mount
MVU 710 - 1/2
Pre-assembled with ring connector



Bidirectional
SCO 610 - 1/2
Pre-assembled with ring connector



Bidirectional
MCO 710 - 1/2
Pre-assembled with ring connector

Flow Control Valves with Silencer Series RSW

Part Number

RSW 1/8
RSW 1/4
RSW 1/2



Silencing Bush Series 2905

Part Number

2905 1/8
2905 1/4
2905 3/8



For use with SCO and MCO flow control valves

CODING EXAMPLE

M

CU

7

02

-

M5

M ACTUATION:
M = Manual
S = Screwdriver

CU ASSEMBLY:
CU = on cylinders unidirectional
VU = on valves unidirectional
CO = bidirectional

7 VERSIONS:
6 = needle (screwdriver operated)
7 = needle (manual operated)

02 FLOW CONTROL RANGE:
02 = \varnothing 1.5 max
04 = \varnothing 2 max
06 = \varnothing 4 max
08 = \varnothing 7 max
10 = \varnothing 12 max

M5 CONNECTIONS:
M5, 1/8, 1/4, 3/8, 1/2



Single Banjo Ring Connector

6610 4 - M5
6610 4 - M6•
6610 4 - 1/8
6610 5 - M5
6610 5 - M6•
6610 5 - 1/8
6610 6 - M5
6610 6 - M6•
6610 6 - 1/8
6610 6 - 1/4
6610 8 - 1/8
6610 8 - 1/4
6610 8 - 3/8
6610 10 - 1/4*
6610 10 - 3/8*
6610 12 - 1/2*



Single Banjo Ring Connector

1610 5/3 - M5
1610 5/3 - M6•
1610 5/3 - 1/8
1610 6/4 - M5
1610 6/4 - M6•
1610 6/4 - 1/8
1610 6/4 - 1/4
1610 6/4 - 3/8
1610 8/6 - 1/8
1610 8/6 - 1/4
1610 8/6 - 3/8
1610 10/8 - 1/8*
1610 10/8 - 1/4*
1610 10/8 - 3/8*
1610 10/8 - 1/2*
1610 12/10 - 3/8*
1610 12/10 - 1/2*
1610 15/12.5 - 1/2*



Banjo Ring Connector

2023 M5 - M5
2023 M5 - M6•
2023 1/8 - 1/8
2023 1/4 - 1/4*
2023 3/8 - 3/8*



Single Banjo Ring Connector

1170 6 - 1/8
1170 6 - 1/4
1170 8 - 1/8*

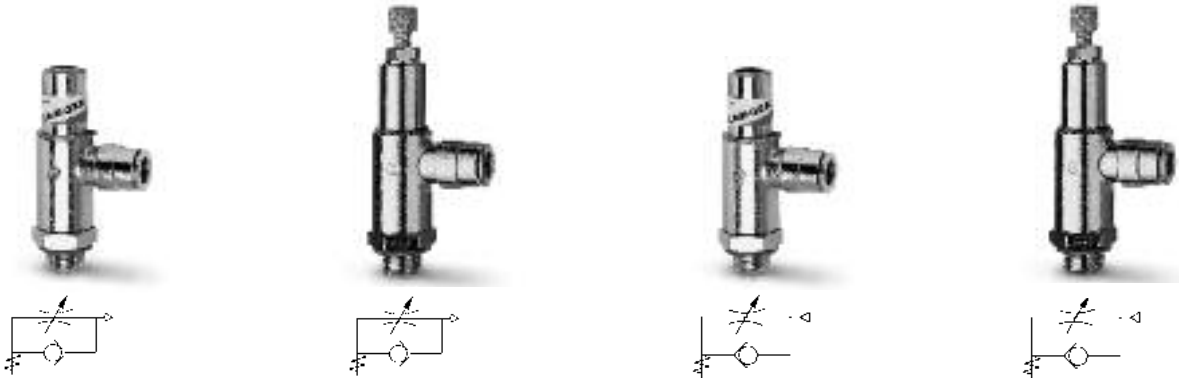
* Banjo ring connectors are only suitable for assemble with type 1635 banjo bolts

• Banjo ring connector required for M5 versions of SCU, MCO, SVU, MVU, SCO and MCO

Series GSCU, GMCU, GSVU, GMVU, GSCO, GMCO Flow Control Valves

Unidirectional and bidirectional M5, 1/8 and 1/4
banjo flow controllers
Nominal diameters 1.5 - 3.5 and 5

4.
7



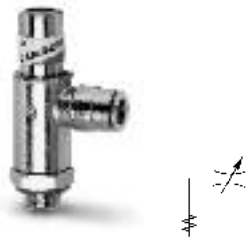
| Unidirectional Cylinder Mounted |
|-----------------------------------|
| GSCU 813-M5-3 |
| GSCU 814-M5-4 |
| GSCU 803-1/8-6 |
| GSCU 804-1/8-8 |
| GSCU 805-1/4-8 |
| GSCU 806-1/4-10 |
| Pre-assembled with ring connector |

| Unidirectional Cylinder Mounted |
|-----------------------------------|
| GMCU 913-M5-3 |
| GMCU 914-M5-4 |
| GMCU 903-1/8-6 |
| GMCU 904-1/8-8 |
| GMCU 905-1/4-8 |
| GMCU 906-1/4-10 |
| Pre-assembled with ring connector |

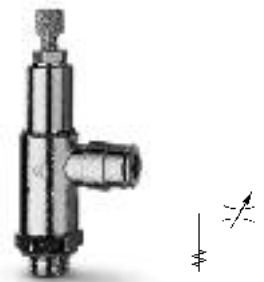
| Unidirectional Valve Mounted |
|-----------------------------------|
| GSVU 813-M5-3 |
| GSVU 814-M5-4 |
| GSVU 803-1/8-6 |
| GSVU 804-1/8-8 |
| GSVU 805-1/4-8 |
| GSVU 806-1/4-10 |
| Pre-assembled with ring connector |

| Unidirectional Valve Mounted |
|-----------------------------------|
| GMVU 913-M5-3 |
| GMVU 914-M5-4 |
| GMVU 903-1/8-6 |
| GMVU 904-1/8-8 |
| GMVU 905-1/4-8 |
| GMVU 906-1/4-10 |
| Pre-assembled with ring connector |

| Bidirectional |
|-----------------------------------|
| GSCO 813-M5-3 |
| GSCO 814-M5-4 |
| GSCO 803-1/8-6 |
| GSCO 804-1/8-8 |
| GSCO 805-1/4-8 |
| GSCO 806-1/4-10 |
| Pre-assembled with ring connector |



| Bidirectional |
|-----------------------------------|
| GMCO 913-M5-3 |
| GMCO 914-M5-4 |
| GMCO 903-1/8-6 |
| GMCO 904-1/8-8 |
| GMCO 905-1/4-8 |
| GMCO 906-1/4-10 |
| Pre-assembled with ring connector |



CODING EXAMPLE

| GM | CU | 9 | 03 | - | 1/8 | - | 6 |
|--|----|---|----|---|---|---|---|
| GM ACTUATION: GM = manual GS = screwdriver | | 9 VERSIONS: 8 = needle (screwdriver operated) 9 = needle (manually operated) | | | 1/8 CONNECTIONS: M5, 1/8, 1/4 | | |
| CU ASSEMBLY: CU = on cylinders unidirectional VU = on valves unidirectional CO = bidirectional | | 03 FLOW CONTROL RANGE: size ∅ tube 13 = 1.5 3 14 = 1.5 4 03 = 3.5 6 04 = 3.5 8 05 = 5 8 06 = 5 10 | | | 6 ∅ TUBE: 3, 4, 6, 8, 10 | | |

Series TMCU – TMVU – TMCO Flow control valves

Unidirectional and bidirectional 1/8, 1/4, 3/8, 1/2 Banjo flow controllers
Nominal diameters Ø 2 - 3,8 - 5,8 - 8 mm



| Part Number | A | B |
|------------------------|-----|----|
| TMCU 972-1/8-4 | 1/8 | 4 |
| TMCU 974-1/8-6 | 1/8 | 6 |
| TMCU 974-1/4-6 | 1/4 | 6 |
| TMCU 976-1/4-8 | 1/4 | 8 |
| TMCU 976-3/8-8 | 3/8 | 8 |
| TMCU 978-3/8-10 | 3/8 | 10 |
| TMCU 978-1/2-10 | 1/2 | 10 |
| TMCU 978-1/2-12 | 1/2 | 12 |

| Part Number | A | B |
|------------------------|-----|----|
| TMVU 972-1/8-4 | 1/8 | 4 |
| TMVU 974-1/8-6 | 1/8 | 6 |
| TMVU 974-1/4-6 | 1/4 | 6 |
| TMVU 976-1/4-8 | 1/4 | 8 |
| TMVU 976-3/8-8 | 3/8 | 8 |
| TMVU 978-3/8-10 | 3/8 | 10 |
| TMVU 978-1/2-10 | 1/2 | 10 |
| TMVU 978-1/2-12 | 1/2 | 12 |

| Part Number | A | B |
|------------------------|-----|----|
| TMCO 972-1/8-4 | 1/8 | 4 |
| TMCO 974-1/8-6 | 1/8 | 6 |
| TMCO 974-1/4-6 | 1/4 | 6 |
| TMCO 976-1/4-8 | 1/4 | 8 |
| TMCO 976-3/8-8 | 3/8 | 8 |
| TMCO 978-3/8-10 | 3/8 | 10 |
| TMCO 978-1/2-10 | 1/2 | 10 |
| TMCO 978-1/2-12 | 1/2 | 12 |

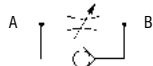
CODING EXAMPLE

| TM | CU | 9 | 74 | - | 1/8 | - | 6 |
|-----------|--|-----------|--|---|------------|------------------------------------|---|
| TM | ACTUATION: TM = manual | 9 | VERSIONS: 9 = needle (manually operated) | | 1/8 | CONNECTIONS: 1/8, 1/4, 3/8, 1/2 | |
| CU | ASSEMBLY: CU = on cylinders unidirectional VU = on valves unidirectional CO = bidirectional | 74 | FLOW CONTROL RANGE: size ø tube 72 = 2 4 74 = 3.8 6 76 = 5.8 8 78 = 8 10-12 | | 6 | Ø TUBE: 4, 6, 8, 10, 12 | |

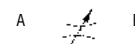
Series RFU, RFO in Line Flow Control Valves

Panel or wall-mounted flow controllers
Unidirectional RFU and bidirectional RFO Connections: M5, 1/8, 1/4
Nominal diameter: M5 = 1.5, 1/8 = 2 and 3mm, 1/4 = 4 and 6mm

| Unidirectional | Thread |
|----------------|--------|
| RFU 452 | M5 |
| RFU 482 | 1/8 |
| RFU 483 | 1/8 |
| RFU 444 | 1/4 |
| RFU 446 | 1/4 |
| RFU 429 | 1/2 |



| Bidirectional | Thread |
|----------------|--------|
| RFO 352 | M5 |
| RFO 382 | 1/8 |
| RFO 383 | 1/8 |
| RFO 344 | 1/4 |
| RFO 346 | 1/4 |



CODING EXAMPLE

| RF | U4 | 8 | 2 |
|-----------|--|----------|---|
| RF | SERIES: RF | 8 | CONNECTIONS: 8 = 1/8, 5 = M5, 4 = 1/4 |
| U4 | FUNCTION: U4 = unidirectional O3 = bidirectional | 2 | FLOW CONTROL RANGE: 2 = ø2 max 4 = ø4 max 3 = ø3 max 6 = ø6 max |

Series 28 Flow Control Valves

Connections: 1/8, 1/4, 3/8, 1/2



A  B

| In Line | |
|-------------|-----|
| 2810 | 1/8 |
| 2810 | 1/4 |
| 2810 | 3/8 |
| 2810 | 1/2 |



A  B

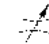
| In Line | |
|-------------|-----|
| 2820 | 1/8 |
| 2820 | 1/4 |
| 2820 | 3/8 |
| 2820 | 1/2 |



A  B

| In Line | |
|-------------|-----|
| 2830 | 1/8 |
| 2830 | 1/4 |
| 2830 | 3/8 |
| 2830 | 1/2 |



A  B

| Panel Mounted | |
|---------------|-----|
| 2819 | 1/8 |
| 2819 | 1/4 |

4.
7



A  B

| Panel Mounted | |
|---------------|-----|
| 2829 | 1/8 |
| 2829 | 1/4 |



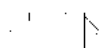
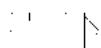
A  B

| Panel Mounted | |
|---------------|-----|
| 2839 | 1/8 |
| 2839 | 1/4 |
| 2839 | 3/8 |
| 2839 | 1/2 |

AUTOMATIC VALVES

Series 2901, 2903, 2921, 2931, 2938, 2939, SP, RSW Silencers

Connections: M5, 1/8, 1/4, 3/8, 1/2, 3/4, 1

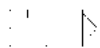
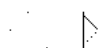


| Part Number | Flow Rate Nl/min | Noise db (A) |
|----------------------|---------------------|-----------------|
| 2901 1/8 | 700 | 75 |
| 2901 1/4 - 17 | 1000 | 78 |
| 2901 1/4 - 22 | 1600 | 92 |
| 2901 3/8 | 1500 | 76 |
| 2901 1/2 | 3400 | 86 |
| 2901 3/4 | 4100 | 87 |
| 2901 1 | 7600 | 88 |

| Part Number | Flow Rate Nl/min | Noise db (A) |
|-----------------|---------------------|-----------------|
| 2903 1/8 | 700 | 74 |

| Part Number | Flow Rate Nl/min | Noise db (A) |
|-----------------|---------------------|-----------------|
| 2921 1/8 | 1550 | 78 |
| 2921 1/4 | 2400 | 79 |
| 2921 3/8 | 4800 | 84 |
| 2921 1/2 | 6800 | 84 |
| 2921 3/4 | 12700 | 78 |
| 2921 1 | >15000 | 80 |

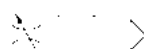
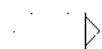
4.
7



| Part Number | Flow Rate Nl/min | Noise db (A) |
|-----------------|---------------------|-----------------|
| 2931 M5 | 450 | 69 |
| 2931 M7 | 1130 | 76 |
| 2931 1/8 | 1819 | 83 |
| 2931 1/4 | 2675 | 85 |
| 2931 3/8 | 4863 | 83 |
| 2931 1/2 | 7085 | 84 |
| 2931 3/4 | 12733 | 78 |
| 2931 1 | >15000 | 82 |

| Part Number | Flow Rate Nl/min | Noise db (A) |
|-----------------|---------------------|-----------------|
| 2938 M5 | 546 | 67 |
| 2938 1/8 | 1441 | 65 |
| 2938 1/4 | 2752 | 79 |
| 2938 3/8 | 4735 | 73 |
| 2938 1/2 | 8534 | 86 |

| Part Number | Flow Rate Nl/min | Noise db (A) |
|----------------|---------------------|-----------------|
| 2939 4 | 335 | 80 |
| 2939 6 | 632 | 79 |
| 2939 8 | 1229 | 89 |
| 2939 10 | 2650 | 87 |



| Part Number |
|---------------|
| SP 1/8 |
| SP 1/4 |
| SP 3/8 |
| SP 1/2 |

| Part Number | Flow Rate Nl/min |
|----------------|---------------------|
| RSW 1/8 | 410 |
| RSW 1/4 | 650 |
| RSW 1/2 | 1590 |