

Vacuum Solutions



A wide range of Components covering most industrial sectors

- *Basic Vacuum Ejectors*
- *In-line Ejectors*
- *Compact Ejectors with Integrated Filter/ Silencer and Blow-Off Function*
- *Compact Ejectors with Air Saving Circuits for Reduced Operation Costs*
- *Electronic Vacuum / Pressure Switches with or without Digital Display*
- *Flat Suction Pads (Round and Oval)*
- *Bellows Suction Pads (1.5 and 2.5 Folds)*
- *Check Valves for Automatic Exclusion*
- *Flexible Pad Mountings*
- *Spring Plungers for Height Compensation*

Please contact your Local Pirtek Centre for more details or call

UK: 0800 38 24 38

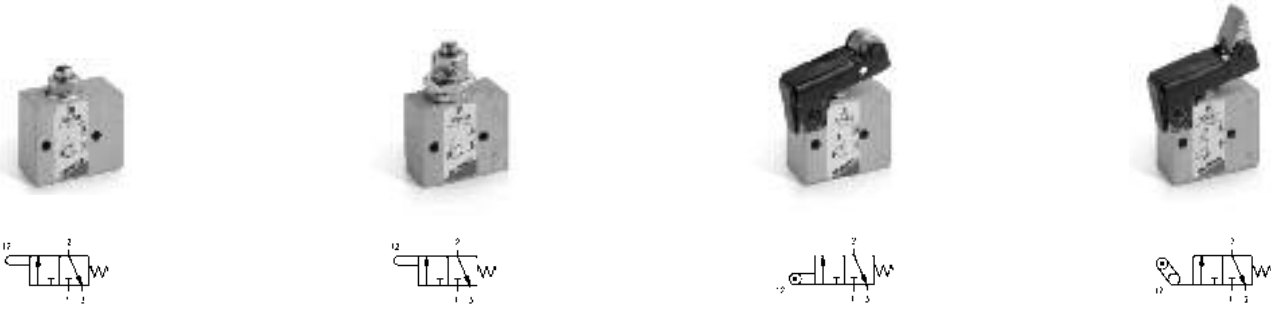
ROI: 1800 74 78 35

PRODUCT INDEX

	Series	Page
Mechanically Operated Minivalves	2	508
Mechanically Operated Minivalves	1 and 3	508
Mechanically Operated Sensor Valves	3 and 4	510
Pneumatic and Electrical - Foot Operated Pedal	2 and 3	511
Manually Operated Console Minivalves	2	512
Manually Operated Valves	1, 3, 4, and VMS	514

Series 2 Mechanically Operated Minivalves

Series 2, 3/2-way Connections: M5, ø4mm cartridge



4.
6

Plunger	Panel Mounted Plunger	Roller Lever	One-Way Trip
235-945 (M5)	235-985 (M5)	235-955 (M5)	235-965 (M5)
234-945 (4mm)	234-985 (4mm)	234-955 (4mm)	234-965 (4mm)

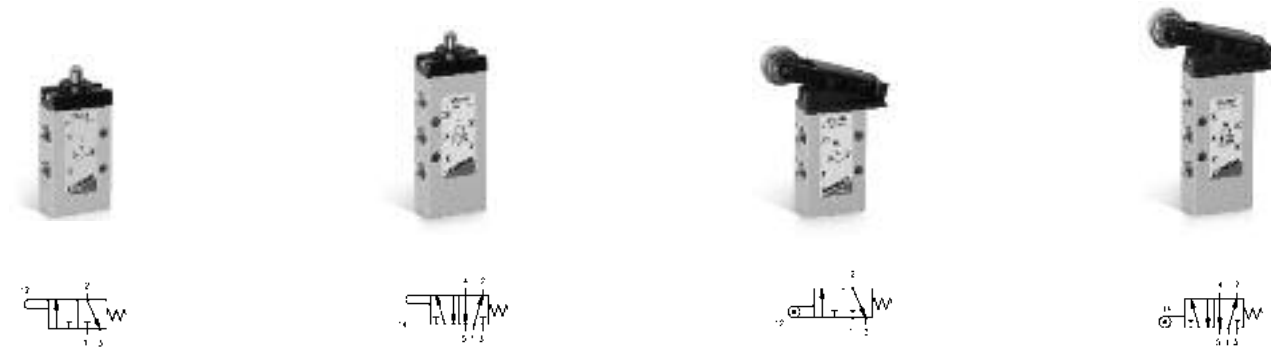
CODING EXAMPLE

2	3	4	-	94	5
2	SERIES: 2		94		ACTUATION: 94 = plunger 95 = roller/lever 96 = unidirectional lever 98 = plunger, panel mounting
3	FUNCTION: 3 = 3/2-way NC 4 = 3/2-way NO on request		5		RESETTING: 5 = Spring return
4	CONNECTIONS: 4 = ø4mm cartridge 5 = M5				

Series 1 and 3 Mechanically Operated Valves

Series 1, 3/2-way and 5/2-way Connections: 1/8" and 1/4"

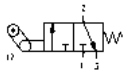
Series 3, 3/2-way and 5/2-way Connections: 1/8"



Plunger 1/8" 3/2	Plunger 1/8" 5/2	Roller/Lever 1/8" 3/2	Roller/Lever 1/8" 5/2
338-945	358-945	338-955	358-955

MECHANICAL AND MANUAL VALVES

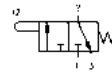
Series 1 and 3 Mechanically Operated Valves - continued



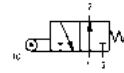
Roller/Lever One-Way Trip 1/8" 3/2
338-965



Roller/Lever One-Way Trip 1/8" 5/2
358-965



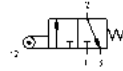
Plunger 1/8" 3/2 N.C.
138-945



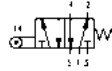
Plunger 1/8" 3/2 N.O.
148-945



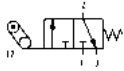
Plunger 1/8" 5/2
158-945



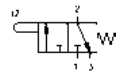
Roller/Lever 1/8" 3/2
138-955



Roller/Lever 1/8" 5/2
158-955



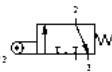
Roller/Lever One-Way Trip 1/8" 3/2
138-965



Plunger 1/4" 3/2
134-945



Plunger 1/4" 5/2
154-945



Roller/Lever 1/4" 3/2
134-955



Roller/Lever 1/4" 5/2
154-955

CODING EXAMPLE

3

3

8

-

94

5

3 SERIES: 1, 3

3 FUNCTION:
3 = 3/2 way N.C.
4 = 3/2 way N.O.
5 = 5/2 way

94 ACTUATION:
94 = plunger
95 = roller/lever
96 = unidirectional roller/lever

8 CONNECTIONS:
8 = 1/8
4 = 1/4 only Series 1

5 RESETTING:
5 = spring return

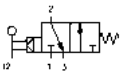
4.
6

Series 3 and 4 Mechanically Operated Sensor Valves

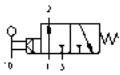
3/2 and 5/2

Connections: 1/8, 1/4

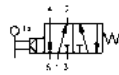
4.
6



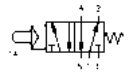
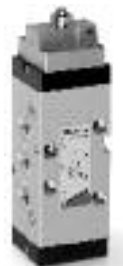
Lever 1/8" 3/2 N.C.
338-D15-9A5



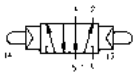
Lever 1/8" 3/2 N.O.
348-D15-9A5



Lever 1/8" 5/2
358-D15-9A5



Plunger 1/8" 5/2
458-015-194



Double Plunger 1/8" 5/2
458-011-294



Plunger 1/4" 5/2
454-015-194



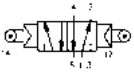
Double Plunger 1/4" 5/2
454-011-294



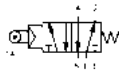
Roller/Lever 1/8" 5/2
458-015-195

MECHANICAL AND MANUAL VALVES

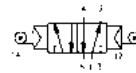
Series 3 and 4 Mechanically Operated Sensor Valves - continued



Double Roller/Lever 1/8" 5/2
458-011-295



Roller/Lever 1/4" 5/2
454-015-195



Double Roller/Lever 1/4" 5/2
454-011-295

4.
6

CODING EXAMPLE

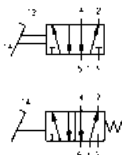
3 | **3** | **8** | **-** | **D15** | **-** | **9A5**

3	SERIES: 3, 4		
3	FUNCTION: 3 = 3/2 way N.C. 4 = 3/2 way N.O. 5 = 5/2 way C.A	D15	D15 = pressure drop/spring 015 = pressure/spring 011 = pressure/pressure
8	CONNECTIONS: 8 = 1/8 4 = 1/4	9A5	RESETTING: 9A5 = lever sensor, spring return 194 = plunger sensor, spring return 294 = plunger sensor, bistable 195 = roller/lever, spring return 295 = roller/lever, bistable

Series 2 and 3 Pneumatic and Electrical - Foot Operated Pedal

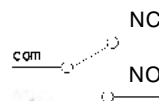
1/4 , 5/2 way (pneumatic).
with NC/NO contacts (electrical).

Pneumatic Pedal



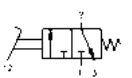
Foot Pedal 1/4" 5/2
354N-925

Electrical Pedal



Foot Pedal
3E2-925

Pneumatic Pedal



Foot Operated Valve 3/2
235-925 (M5)
234-925 (4mm)

Series 2 Manually Operated Console Minivalves

3/2 and 5/3

Connections: M5, ø4mm cartridge

4.
6



Push Button
200-895 22



Palm Switch Spring Return
200-975 22



Palm Switch Twist Unlock
200-972 22



Palm Switch Push Unlock
200-970 22



Joystick Spring Return
200-905 22



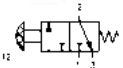
P2-Position Selector
200-990 22



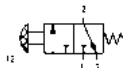
3-Position Selector
200-870 22



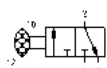
Key Switch
200-904 22



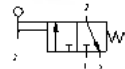
Push Button 3/2
235-895 (M5)
234-895 (4mm)



Palm Switch Spring Return 3/2
235-975 (M5)
234-975 (4mm)



Palm Switch Twist Unlock 3/2
235-972 (M5)
234-972 (4mm)

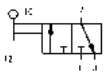


Joystick Spring Return 3/2
235-905 (M5)
234-905 (4mm)

MECHANICAL AND MANUAL VALVES

Series 2 Manually Operated Console Minivalves - continued

4.
6



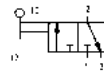
2-Position Selector 3/2

235-990 (M5)
234-990 (4mm)



3-Position Selector 5/3

285-870 (M5)
284-870 (4mm)



Key Switch 3/2

235-904 (M5)
234-904 (4mm)



Valve for use with Operators

235-000 (M5)
234-000 (4mm)



Bracket

210-000



Bracket

220-000



Joystick 1/8" 3/2

234-9054

CODING EXAMPLE

2	3	4	-	97	5
2 SERIES: 2		3 FUNCTION: 3 = 3/2 way NC 4 = 3/2 way NO 8 = 5/3 way CO		97 MODE OF OPERATION*: 87 = 3 - position selector 89 = push button 97 = palm-switch 90 = joystick 99 = 2 - position selector 92 = pedal 904 = key 2 positions	
4 CONNECTIONS: 4 = ø4mm cartridge 5 = M5		5 RESETTING: 5 = spring return 0 = stable 2 = latching-twist to release			

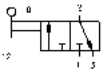
Series 1, 3, 4 and VMS Manually Operated Valves

Series 1, 3 and 4, 3/2, 5/2 and 5/3

Connections: 1/8 - 1/4

VMS Series, 3/2

Connections: 1/8 - 1/4 - 3/8 - 1/2, 3/4



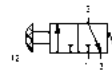
Switch 1/8" 3/2

338-990



Switch 1/8" 5/2

358-990

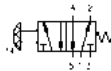


Push Button 1/8" 3/2

338-895 (Black)

338-896 (Green)

338-897 (Red)

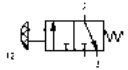


Push Button 1/8" 5/2

358-895 (Black)

358-896 (Green)

358-897 (Red)

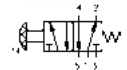


Palm Switch 1/8" 3/2

338-975 (Black)

338-976 (Green)

338-977 (Red)

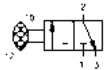


Palm Switch 1/8" 5/2

358-975 (Black)

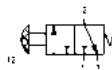
358-976 (Green)

358-977 (Red)



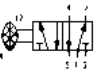
Knob 1/8" 3/2

338-910



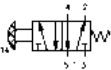
Knob 1/8" 3/2

338-915



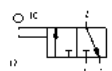
Knob 1/8" 5/2

358-910



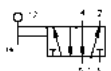
Knob 1/8" 5/2

358-915



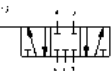
Lever 1/8" 3/2

338-900



Lever 1/8" 5/2

358-900



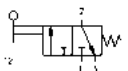
Lever 1/8" 5/3

368-900



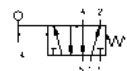
Lever 1/8" 5/3

378-900



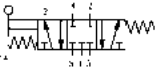
Lever 1/8" 3/2

338-905



Lever 1/8" 5/2

358-905



Lever 1/8" 5/3

368-905

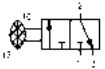


Lever 1/8" 5/3

378-905

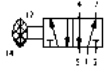
MECHANICAL AND MANUAL VALVES

Series 1, 3, 4 and VMS Manually Operated Valves - continued



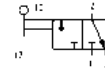
Knob 1/4" 3/2

434-910



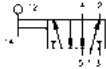
Knob 1/4" 5/2

454-910



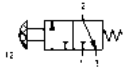
Lever 1/4" 3/2

434-900



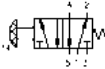
Lever 1/4" 5/2

454-900



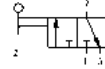
Knob 1/4" 3/2

434-915



Knob 1/4" 5/2

454-915



Lever 1/4" 3/2

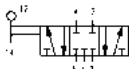
434-905



Lever 1/4" 5/2

454-905

4.
6



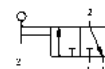
Lever 1/4" 5/3

464-900



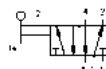
Lever 1/4" 5/3

474-900



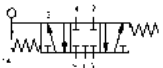
Lever 1/8" 3/2

138-900



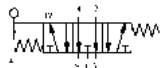
Lever 1/8" 5/2

158-900



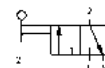
Lever 1/4" 5/3

464-905



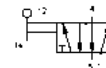
Lever 1/4" 5/3

474-905



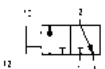
Lever 1/4" 3/2

134-900



Lever 1/4" 5/2

154-900



Slide Valve

VMS-105-M5

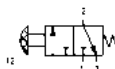
VMS-118-1/8

VMS-114-1/4

VMS-138-3/8

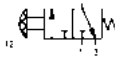
VMS-112-1/2

VMS-134-3/4



Lever 1/8" 3/2

138-935



Lever 1/4" 3/2

134-935