

# *Complete Range of Movement Solutions*



A complete range of Movement Solutions are available from your Local Pirtek Centre.

- *ISO & VDMA Pneumatic Cylinders*
- *Compact Cylinders*
- *Guided Cylinders*
- *Non-Standard Cylinders*
- *Rotary Cylinders*
- *Grippers*
- *Rodless Cylinders*
- *Stainless Steel Cylinders*
- *Proximity Switches*
- *Additional Accessories*

Please contact your Local Pirtek Centre for more details or call

**UK: 0800 38 24 38**

**ROI: 1800 74 78 35**

### PRODUCT INDEX

|  | Series  | Page |
|--|---------|------|
| Electropneumatically Operated Valves                   | 3       | 496  |
| Electropneumatically Operated Valves                   | 3 and 4 | 499  |
| Electropneumatically Operated Valves                   | 4       | 500  |
| Pneumatically Operated Valves                          | 3 and 4 | 501  |
| Electropneumatically and Pneumatically Operated Valves | 9       | 502  |
| U70, G70, A80, G80, H80 Solenoid Coils                 |         | 504  |
| Directly Operated Solenoid Valves                      | A       | 505  |

## Series 3 Electropneumatically Operated Valves

Connections: Series 3 - 1/8, 1/4, 3/2 - way, 5/2 - way, 5/3 - way and 2 x 3/2 - way  
 Series 4 - 1/8, 1/4 and 1/2, 3/2, 5/2 and 5/3 - way

3/2 - way single solenoid valve - 1/8 - N.C. and N.O.



| Part Number               |
|---------------------------|
| <b>338-015-02-*</b>       |
| <b>338L-015-02-*</b>      |
| (For use with CNVL bases) |

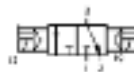
\*Coil sold separately, page 504

3/2 - way double solenoid valve - 1/8



| Part Number               |
|---------------------------|
| <b>348-015-02-*</b>       |
| <b>348L-015-02-*</b>      |
| (For use with CNVL bases) |

\*Coil sold separately, page 504



| Part Number               |
|---------------------------|
| <b>338-011-02-*</b>       |
| <b>338L-011-02-*</b>      |
| (For use with CNVL bases) |

\*Coil sold separately, page 504

### Technical Data

#### Type of Construction

Spool-type (indirectly operated)

#### Media

Filtered air, without lubrication. If lubricated air is used, it is recommended to use oil ISO VG32. Once applied the lubrication should never be interrupted

#### Operating Temperature

0°C to +60°C.  
 (with dry air -20°C to +60°C)

#### Materials

Body: Aluminium  
 Spool: Stainless Steel  
 Seals: NBR

#### Connections

1/8, 1/4, 1/2

#### Mountings

Through holes in valve body

#### Additional Options

Seal Kits available on request

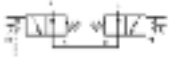
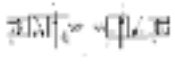
2 x 3/2 - way double solenoid valve - 1/8 - N.C. and N.O.



| Part Number          |
|----------------------|
| <b>338D-015-02-*</b> |

| Part Number          |
|----------------------|
| <b>348D-E15-02-*</b> |

| Part Number          |
|----------------------|
| <b>398D-015-02-*</b> |



| Part Number          |
|----------------------|
| <b>348D-015-02-*</b> |

| Part Number          |
|----------------------|
| <b>348D-E15-02-*</b> |

| Part Number          |
|----------------------|
| <b>398D-E15-02-*</b> |

\*Coil sold separately, page 504

\*Coil sold separately, page 504

\*Coil sold separately, page 504

5/2 - way single solenoid valve - 1/8



| Part Number         |
|---------------------|
| <b>358-015-02-*</b> |



| Part Number         |
|---------------------|
| <b>358-E15-02-*</b> |

\*Coil sold separately, page 504



5/2 - way double solenoid valve - 1/8



| Part Number         |
|---------------------|
| <b>358-011-02-*</b> |



| Part Number         |
|---------------------|
| <b>358-E11-02-*</b> |

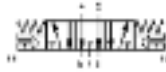
\*Coil sold separately, page 504



## SOLENOID AND PNEUMATIC VALVES

Series 3 Electropneumatically Operated Valves - continued

5/3 - way double solenoid valve - 1/8 -  
centres closed, centres open and pressure centres



Part Number

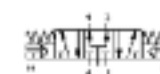
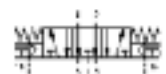
**368-011-02-\***

Part Number

**378-011-02-\***

Part Number

**388-011-02-\***



Part Number

**368-E11-02-\***

Part Number

**378-E11-02-\***

Part Number

**388-E11-02-\***

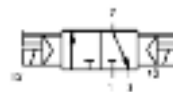
\*Coil sold separately, page 504

\*Coil sold separately, page 504

\*Coil sold separately, page 504

3/2 - way single solenoid valve - 1/4 - N.C. and N.O.

3/2 - way double solenoid valve - 1/4

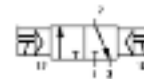
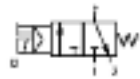


Part Number

**334-015-02-\***

Part Number

**334-011-02-\***



Part Number

**334-E15-02-\***

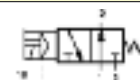
Part Number

**334-E11-02-\***

Part Number

**344-015-02-\***

\*Coil sold separately, page 504



Part Number

**344-E15-02-\***

\*Coil sold separately, page 504



Series 3 Electropneumatically Operated Valves - continued

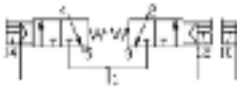
2 x 3/2 - way double solenoid valve - 1/4 - N.C. and N.O.

4.  
5



Part Number

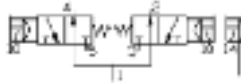
**334D-015-02-\***



Part Number

**334D-E15-02-\***

\*Coil sold separately, page 504



Part Number

**344D-015-02-\***



Part Number

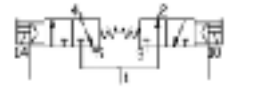
**344D-E15-02-\***

\*Coil sold separately, page 504



Part Number

**394D-015-02-\***



Part Number

**394D-E15-02-\***

\*Coil sold separately, page 504

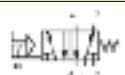
5/2 - way single solenoid valve - 1/4

5/2 - way double solenoid valve - 1/4



Part Number

**354-015-02-\***



Part Number

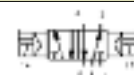
**354-E15-02-\***

\*Coil sold separately, page 504



Part Number

**354-011-02-\***



Part Number

**354-E11-02-\***

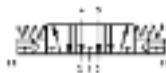
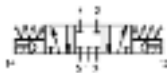
\*Coil sold separately, page 504



## SOLENOID AND PNEUMATIC VALVES

### Series 3 Electropneumatically Operated Valves continued

5/3 - way double solenoid valve - 1/4 -  
centres closed, centres open and pressure centres



Part Number  
**364-011-02-\***



Part Number  
**364-E11-02-\***

\*Coil sold separately, page 504

Part Number  
**374-011-02-\***



Part Number  
**374-E11-02-\***

\*Coil sold separately, page 504

Part Number  
**384-011-02-\***



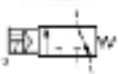
Part Number  
**384-E11-02-\***

\*Coil sold separately, page 504

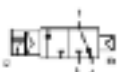
4.  
5

### Series 4 Electropneumatically Operated Valves

3/2 - way single  
solenoid valve - 1/8 - N.C.



Part Number  
**438-015-22-\***



Part Number  
**438-016-22-\***

\*Coil sold separately, page 504

3/2 - way double  
solenoid valve - 1/8 - N.C.



Part Number  
**438-011-22-\***

\*Coil sold separately, page 504

5/2 - way single  
solenoid valve - 1/8



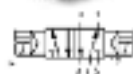
Part Number  
**458-015-22-\***



Part Number  
**458-016-22-\***

\*Coil sold separately, page 504

5/2 - way double  
solenoid valve - 1/8



Part Number  
**458-011-22-\***

\*Coil sold separately, page 504

Series 4 Electropneumatically Operated Valves - continued

4.  
5

5/3 - way double solenoid valve  
- 1/8 - centres closed

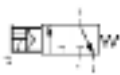


Part Number  
**468-011-22-\***

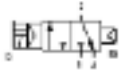


Part Number  
**478-011-22-\***  
\*Coil sold separately, page 504

3/2 - way single solenoid valve - 1/4 - N.C.



Part Number  
**434-015-22-\***



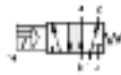
Part Number  
**434-016-22-\***  
\*Coil sold separately, page 504

3/2 - way double solenoid valve - 1/4 - N.C.



Part Number  
**434-011-22-\***  
\*Coil sold separately, see page 504

5/2 - way single solenoid valve - 1/4



Part Number  
**454-015-22-\***



Part Number  
**454-016-22-\***  
\*Coil sold separately, page 504

5/2 - way double solenoid valve - 1/4



Part Number  
**454-011-22-\***  
\*Coil sold separately, page 504

5/2 - way single vertical solenoid valve - 1/4



Part Number  
**454-V15-22-\***

Part Number  
**454-V16-22-\***  
\*Coil sold separately, page 504

5/2 - way double vertical solenoid valve - 1/4



Part Number  
**454-V11-22-\***  
\*Coil sold separately, page 504

5/3 - way double solenoid valve - 1/4 - centres closed and centre open



Part Number  
**464-011-22-\***

Part Number  
**474-011-22-\***  
\*Coil sold separately, page 504

## SOLENOID AND PNEUMATIC VALVES

Series 3 and 4 Pneumatically Operated Valves

Series 3: 1/8, 3/2-way and 5/2-way  
 Series 4: 1/8, 1/4 and 1/2  
 3/2, 5/2 and 5/3-way



| Part Number                               | Part Number                               | Part Number    |
|---|---|----------------|
| <b>338-035</b>                            | <b>338-033</b>                            | <b>358-035</b> |
| <b>338L-035</b> (For use with CNVL bases) | <b>338L-033</b> (For use with CNVL bases) | <b>354-035</b> |
| <b>334-035</b>                            | <b>334-033</b>                            |                |



| Part Number    | Part Number    | Part Number     |
|----------------|----------------|-----------------|
| <b>358-033</b> | <b>368-033</b> | <b>338D-035</b> |
| <b>354-033</b> | <b>364-033</b> | <b>334D-035</b> |



| Part Number    | Part Number     |
|----------------|-----------------|
| <b>378-033</b> | <b>348D-035</b> |
| <b>374-033</b> | <b>344D-035</b> |



| Part Number    | Part Number     |
|----------------|-----------------|
| <b>388-033</b> | <b>398D-035</b> |
| <b>384-033</b> | <b>394D-035</b> |



| Part Number   | Part Number   | Part Number   | Part Number   |
|---------------|---------------|---------------|---------------|
| <b>438-35</b> | <b>458-35</b> | <b>438-33</b> | <b>458-33</b> |



| Part Number   | Part Number   |
|---------------|---------------|
| <b>438-34</b> | <b>458-34</b> |

### Technical Data

#### Type of Construction

With spool

#### Media

Filtered air, without lubrication.

If lubricated air is used, it is recommended to use oil ISO VG32. Once applied the lubrication should never be interrupted.

#### Operating Temperature

0°C to +80°C.

(with dry air -20°C to +60°C)

#### Materials

Body: Aluminium

Spool: Stainless steel

Seals: NBR

#### Threaded Connections

1/8, 1/4, 1/2

#### Mountings

Through holes in valve body

#### Additional Options

Seal Kits available on request

## Series 9 Electropneumatically and Pneumatically Operated Valves

Assembly with sub-base (ISO 5599/1 Standards)  
Size 1, 2 and 3

### Technical Data

#### Type of Construction

Spool-type (Servo controlled)

#### Media

Filtered air, without lubrication. If lubricated air is used, it is recommended to use oil ISO VG32. Once applied the lubrication should never be interrupted

#### Operating Temperature

0°C to +60°C. (with dry air -20°C to +60°C)

#### Materials

Body: Aluminium  
Spool: Stainless steel  
Seal: NBR

#### Mountings

Threaded holes in sub-base

#### Additional Options

Seal Kits available on request



4.  
5

| Part Number            |
|------------------------|
| <b>951-000-P15-23*</b> |
| <b>952-000-P15-23*</b> |
| <b>953-000-P15-23*</b> |

\*Coil sold separately, page 504

| Part Number            |
|------------------------|
| <b>951-000-P16-23*</b> |
| <b>952-000-P16-23*</b> |
| <b>953-000-P16-23*</b> |

\*Coil sold separately, page 504



| Part Number            |
|------------------------|
| <b>951-000-P11-23*</b> |
| <b>952-000-P11-23*</b> |
| <b>953-000-P11-23*</b> |

\*Coil sold separately, page 504

| Part Number            |
|------------------------|
| <b>961-000-P11-23*</b> |
| <b>962-000-P11-23*</b> |
| <b>963-000-P11-23*</b> |

\*Coil sold separately, page 504

| Part Number            |
|------------------------|
| <b>971-000-P11-23*</b> |
| <b>972-000-P11-23*</b> |
| <b>973-000-P11-23*</b> |

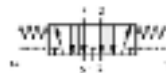
\*Coil sold separately, page 504



| Part Number       |
|-------------------|
| <b>951-000-33</b> |
| <b>952-000-33</b> |
| <b>953-000-33</b> |

| Part Number       |
|-------------------|
| <b>951-000-34</b> |
| <b>952-000-34</b> |
| <b>953-000-34</b> |

| Part Number       |
|-------------------|
| <b>951-000-35</b> |
| <b>952-000-35</b> |
| <b>953-000-35</b> |



| Part Number       |
|-------------------|
| <b>961-000-33</b> |
| <b>962-000-33</b> |
| <b>963-000-33</b> |

| Part Number       |
|-------------------|
| <b>971-000-33</b> |
| <b>972-000-33</b> |
| <b>973-000-33</b> |

## SOLENOID AND PNEUMATIC VALVES

### CODING EXAMPLE

|          |  |          |          |          |            |  |          |            |          |           |  |          |          |          |          |          |
|----------|--|----------|----------|----------|------------|--|----------|------------|----------|-----------|--|----------|----------|----------|----------|----------|
| <b>9</b> | <b>5</b>   | <b>1</b> | <b>-</b> | <b>C</b> | <b>1</b>   | <b>B</b>   | <b>-</b> | <b>P16</b> | <b>-</b> | <b>23</b> | <b>-</b>   | <b>U</b> | <b>7</b> | <b>7</b> | <b>-</b> | <b>S</b> |
| <b>9</b> | SERIES: 9  |          |          |          | <b>1</b>   | CONNECTIONS (OUTLETS):<br>1 = 1/4<br>2 = 3/8<br>3 = 1/2  |          |            |          | <b>U</b>  | SOLENOID MATERIAL:<br>U = PPS<br>G = Nylon         |          |          |          |          |          |
| <b>5</b> | NO OF WAYS/POSITIONS:<br>5 = 5/2<br>6 = 5/3 Closed centres<br>7 = 5/3 Open centres   |          |          |          | <b>B</b>   | N° OF SUB-BASE:<br>A = 1                    *K = 9<br>*B = 2                *L = 10<br>*C = 3                *M = 11<br>*D = 4                *N = 12<br>*E = 5                *P = 13<br>*F = 6                *R = 14<br>*G = 7                *S = 15<br>*H = 8   |          |            |          | <b>7</b>  | SOLENOID DIMENSIONS:<br>7 = 22 x 22<br>8 = 30 x 30 |          |          |          |          |          |
| <b>1</b> | SIZE:<br>1 = Size 1<br>2 = Size 2<br>3 = Size 3  |          |          |          | <b>P16</b> | ACTUATION:<br>33 = pneumatic, pneumatic return<br>34 = pneumatic, differential pneumatic return<br>35 = pneumatic, mechanical spring return<br>P11 = double solenoid (horizontal solenoids)<br>P15 = single solenoid, spring return (horizontal solenoids)<br>P16 = solenoid, pneumatic spring return (horizontal solenoids) |          |            |          | <b>7</b>  | SOLENOID VOLTAGE:<br>See solenoids page 2.00/031   |          |          |          |          |          |
| <b>C</b> | SUB-BASE:<br>C = ISO (manifold outlets)<br>F = ISO (single sub-base, side connections)<br>G = ISO (single sub-base, rear connections)<br>N = ISO (front outlet interface)<br>N1A = front outlet sub-base |          |          |          | <b>23</b>  | SOLENOID INTERFACE:<br>23 = A531 - BC2   |          |            |          | <b>S</b>  | SPECIAL:<br>S = Special to be specified            |          |          |          |          |          |

\*Complete with two end-blocks Part Number **90\*-H\*\*** or **90\*-HN\***.

### Sub-base for Series 9

|   |  |  |   |
|---|--|--|---|
|  |                 |  |  |
| Single Sub-base with Side Outlets   | Single Sub-base with Rear Outlets  | Manifold sub-base with common exhausts and inlet with outlet connection on rear      | End Block for manifold Sub-base   |
| Size  | Size   | Size   | Size  |
| <b>901-F1A</b> 1  | <b>901-G1A</b> 1   | <b>901-C1A</b> 1   | <b>901-H1*</b> 1  |
| <b>902-F2A</b> 2  | <b>902-G2A</b> 2   | <b>902-C2A</b> 2   | <b>902-H2*</b> 2  |
| <b>903-F3A</b> 3  | <b>903-G3A</b> 3   | <b>903-C3A</b> 3   | <b>903-H3*</b> 3  |
|   |  |  | *Pair   |
|  |                 |  |   |
| End Block with Front Outlet   | Manifold Sub-base with common inlet and exhaust connection and with outlet connection on the front | End Block for manifold bases with front outlets                                      |   |
| Size  | Size   | Size   |   |
| <b>901-N1</b> 1   | <b>901-N1A</b> 1   | <b>901-HN1</b> 1   |   |
| <b>902-N2</b> 2   |  |  |   |
| <b>903-N3</b> 3   |  |  |   |
|  |                 |  |  |
| Cover Plate for Unused Positions  | Mounting   | Separation Joint   | Separation Joint  |
| <b>901-TP</b>   | <b>901-C1A-TP</b><br><b>902-C2A-TP</b>   | <b>901-N1A-T</b>   | <b>901-N1A/TP</b>   |

4.  
5

## U70, G70, A80, G80, H80 Solenoid Coils

Solenoids for electropneumatically operated valves Series A-3-4-9-NA



| Solenoid Voltages U7 |      |            |       |
|----------------------|------|------------|-------|
| <b>U7H</b>           | 24V  | 50/60 Hz   | 3.5VA |
|                      | 12V  | DC         | 3.1W  |
| <b>U7K</b>           | 110V | AC 50/60Hz | 4.3VA |
|                      | 125V | AC 50/60Hz | 5.5VA |
| <b>U7J</b>           | 230V | 50/60Hz    | 3.5VA |
|                      | 240V | 50/60Hz    | 4VA   |
| <b>U79</b>           | 48V  | DC         | 3.1W  |
| <b>U710</b>          | 110V | DC         | 3.2W  |
| <b>U77</b>           | 24V  | DC         | 3.1W  |
|                      | 48V  | 50/60Hz    | 3.5VA |
| <b>U7F</b>           | 380V | 50/60Hz    | 7VA   |
| <b>U72</b>           | 12V  | DC         | 5W    |
| <b>U73</b>           | 24V  | DC         | 5W    |
| <b>U74</b>           | 48V  | DC         | 5.3W  |
| <b>U76</b>           | 110V | DC         | 4.2W  |

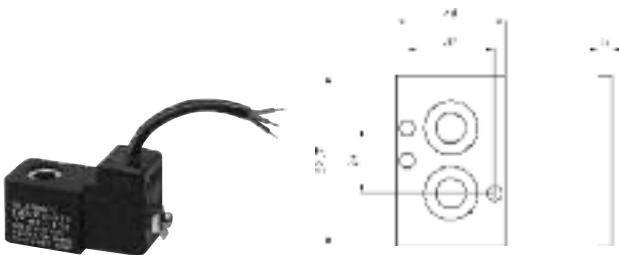
| Solenoid Voltages G70 |      |            |       |
|-----------------------|------|------------|-------|
| <b>G7H</b>            | 24V  | 50/60 Hz   | 3.5VA |
|                       | 12V  | DC         | 3.1W  |
| <b>G7K</b>            | 110V | AC 50/60Hz | 4.3VA |
|                       | 125V | AC 50/60Hz | 5.5VA |
| <b>G7J</b>            | 230V | 50/60Hz    | 3.5VA |
|                       | 240V | 50/60Hz    | 4VA   |
| <b>G79</b>            | 48V  | DC         | 3.1W  |
| <b>G710</b>           | 110V | DC         | 3.2W  |
| <b>G77</b>            | 24V  | DC         | 3.1W  |
|                       | 48V  | 50/60HZ    | 3.5VA |
| <b>G7F</b>            | 380V | 50/60HZ    | 7VA   |
| <b>G72</b>            | 12V  | DC         | 5W    |
| <b>G73</b>            | 24V  | DC         | 5W    |
| <b>G74</b>            | 48V  | DC         | 5.3W  |
| <b>G76</b>            | 110V | DC         | 4.2W  |



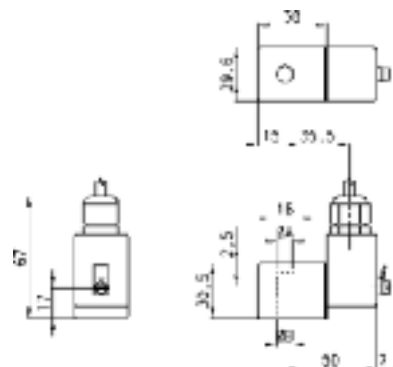
| Solenoid Voltages A80 |      |          |     |
|-----------------------|------|----------|-----|
| <b>A8B</b>            | 24V  | 50/60 Hz | 5VA |
| <b>A8D</b>            | 110V | 50/60 Hz | 5VA |
| <b>A8E</b>            | 220V | 50/60Hz  | 5VA |
| <b>A83</b>            | 24V  | DC       | 4W  |
| <b>A84</b>            | 48V  | DC       | 4W  |
| <b>A86</b>            | 110V | DC       | 4W  |



| Solenoid Voltages G90 |     |
|-----------------------|-----|
| <b>G93</b>            | 24V |



| Solenoid Voltages H80 |      |          |       |
|-----------------------|------|----------|-------|
| <b>H8B</b>            | 24V  | 50/60 Hz | 5.5VA |
| <b>H8C</b>            | 48V  | 50/60 Hz | 5.5VA |
| <b>H8D</b>            | 110V | 50/60Hz  | 5.5VA |
| <b>H8E</b>            | 220V | 50/60Hz  | 5.5VA |
| <b>H83</b>            | 24V  | DC       | 5.5W  |



## SOLENOID AND PNEUMATIC VALVES

### Series A Directly Operated Solenoid Valves

2/2 Way, 3/2 Way. Monostable, bistable (with magnetic memory)  
Connection: M5, 1/8, ø4mm cartridge.

The Camozzi range of Series A Directly Operated Solenoid Valves can be used with dry or lubricated air.



| Part Number        | Thread | Function |
|--------------------|--------|----------|
| <b>A321-0C2</b> -* | M5     | 2/2 N.C. |
| <b>A321-1C2</b> -* | 1/8    | 2/2 N.C. |
| <b>A321-1D2</b> -* | 1/8    | 2/2 N.C. |
| <b>A321-1E2</b> -* | 1/8    | 2/2 N.C. |
| <b>A322-0C2</b> -* | M5     | 2/2 N.O. |
| <b>A322-1C2</b> -* | 1/8    | 2/2 N.O. |

| Part Number        | Thread | Function |
|--------------------|--------|----------|
| <b>A331-0C2</b> -* | M5     | 3/2 N.C. |
| <b>A331-1C2</b> -* | 1/8    | 3/2 N.C. |
| <b>A332-0C2</b> -* | M5     | 3/2 N.O. |
| <b>A332-1C2</b> -* | 1/8    | 3/2 N.O. |

| Part Number        | Thread   | Function |
|--------------------|----------|----------|
| <b>AA31-0C2</b> -* | 1/8 - M5 | 3/2 N.C. |
| <b>AA31-CC2</b> -* | 1/8 - ø4 | 3/2 N.C. |

| Part Number        | Thread | Function |
|--------------------|--------|----------|
| <b>AA31-1C2</b> -* | 1/8    | 3/2 N.C. |

| Part Number        | Thread | Function    | Part Number        | Interface | Function | Part Number        | Interface | Function |
|--------------------|--------|-------------|--------------------|-----------|----------|--------------------|-----------|----------|
| <b>A331-3C2</b> -* | M5     | 1/83/2 N.C. | <b>A631-AC2</b> -* | OR        | 3/2 N.C. | <b>A531-BC2</b> -* | OR        | 3/2 N.C. |
| <b>A331-4C2</b> -* | M5     | 1/83/2 N.C. |                    |           |          |                    |           |          |

\*Coil sold separately, see page 504

#### Technical Data

##### Type of Construction

Poppet type

##### Media

Filtered air, without lubrication.

If lubricated air is used, it is recommended to use oil ISO VG32. Once applied the lubrication should never be interrupted.

##### Operating Pressure

See technical data page 2.00/002

##### Flow Rate

See technical data page 2.00/002

##### Operating Temperature

0°C to +60°C

(with dry air -20°C to +60°C)

##### Materials

Body: OT58 Brass nickel-plated (A531... nylon)

Seals: NBR Other Parts: Stainless Steel

##### Connections

M5, 1/8, ø4mm cartridge

##### Mountings

By means of M4 screws

##### Additional Options

Seal Kits available on request

##### Special Requests

For assistance, contact our technical office or your local Camozzi distributor.

4.  
5

#### CODING EXAMPLE

**A** | **3** | **3** | **1** | **-** | **0** | **C** | **2** | **-** | **U** | **7** | **7**

#### A SERIES:

| <b>3</b> BODY DESIGN:<br>1 = base (24 x 24 mm)<br>interface rotatable through 360°<br>2 = base (24 x 24 mm) fixed interface<br>3 = threaded body<br>4 = rapid exhaust body<br>5 = base with ISO standard interface, fixed<br>6 = base (16 x 16 mm)<br>interface rotatable through 360°<br>For other options please contact our sales office. | <b>0</b> CONNECTIONS:<br><table border="1"> <thead> <tr> <th></th> <th>1</th> <th>2</th> <th>3</th> </tr> </thead> <tbody> <tr> <td>0</td> <td>M5</td> <td>M5</td> <td>M5</td> </tr> <tr> <td>1</td> <td>1/8</td> <td>1/8</td> <td>M5</td> </tr> <tr> <td>3</td> <td>M5</td> <td>1/8 male</td> <td>M5</td> </tr> <tr> <td>4</td> <td>M5</td> <td>1/8 male</td> <td>M5</td> </tr> <tr> <td></td> <td></td> <td>(with manual override)</td> <td></td> </tr> <tr> <td>A</td> <td>rotatable<br/>O-ring<br/>interface</td> <td></td> <td>M5</td> </tr> <tr> <td>B</td> <td>fixed<br/>O-ring<br/>interface</td> <td></td> <td>M5</td> </tr> </tbody> </table> |   | 1  | 2 | 3 | 0 | M5 | M5 | M5 | 1 | 1/8 | 1/8 | M5 | 3 | M5 | 1/8 male | M5 | 4 | M5 | 1/8 male | M5 |  |  | (with manual override) |  | A | rotatable<br>O-ring<br>interface |  | M5 | B | fixed<br>O-ring<br>interface |  | M5 | <b>U</b> ENCAPSULATING MATERIAL:<br>G = Nylon<br>U = PET (standard)<br>A8 = PPS<br>H8 = PA6VO |
|--|---|---|----|---|---|---|----|----|----|---|-----|-----|----|---|----|----------|----|---|----|----------|----|--|--|------------------------|--|---|----------------------------------|--|----|---|------------------------------|--|----|---|
|  | 1   | 2   | 3  |   |   |   |    |    |    |   |     |     |    |   |    |          |    |   |    |          |    |  |  |                        |  |   |                                  |  |    |   |                              |  |    |   |
| 0  | M5  | M5  | M5 |   |   |   |    |    |    |   |     |     |    |   |    |          |    |   |    |          |    |  |  |                        |  |   |                                  |  |    |   |                              |  |    |   |
| 1  | 1/8   | 1/8   | M5 |   |   |   |    |    |    |   |     |     |    |   |    |          |    |   |    |          |    |  |  |                        |  |   |                                  |  |    |   |                              |  |    |   |
| 3  | M5  | 1/8 male  | M5 |   |   |   |    |    |    |   |     |     |    |   |    |          |    |   |    |          |    |  |  |                        |  |   |                                  |  |    |   |                              |  |    |   |
| 4  | M5  | 1/8 male  | M5 |   |   |   |    |    |    |   |     |     |    |   |    |          |    |   |    |          |    |  |  |                        |  |   |                                  |  |    |   |                              |  |    |   |
|  |   | (with manual override)  |    |   |   |   |    |    |    |   |     |     |    |   |    |          |    |   |    |          |    |  |  |                        |  |   |                                  |  |    |   |                              |  |    |   |
| A  | rotatable<br>O-ring<br>interface  |   | M5 |   |   |   |    |    |    |   |     |     |    |   |    |          |    |   |    |          |    |  |  |                        |  |   |                                  |  |    |   |                              |  |    |   |
| B  | fixed<br>O-ring<br>interface  |   | M5 |   |   |   |    |    |    |   |     |     |    |   |    |          |    |   |    |          |    |  |  |                        |  |   |                                  |  |    |   |                              |  |    |   |
| <b>3</b> N° OF CONNECTIONS:<br>2 = 2 way<br>3 = 3 way  | <b>C</b> NOMINAL DIAMETER:<br>C = 1.5ø D = 2ø E = 2.5ø  | <b>7</b> SOLENOID DIMENSIONS:<br>7 = 22 x 22 9 = 22 x 58<br>8 = 30 x 30 |    |   |   |   |    |    |    |   |     |     |    |   |    |          |    |   |    |          |    |  |  |                        |  |   |                                  |  |    |   |                              |  |    |   |
| <b>1</b> FUNCTION:<br>1 = NC (normally closed)<br>2 = NO (normally open)   | <b>2</b> BODY MATERIAL:<br>1 = Aluminium<br>2 = OT58 brass A531 - BC2: Nylon  | <b>7</b> SOLENOID VOLTAGE:<br>See page 2.00/031                         |    |   |   |   |    |    |    |   |     |     |    |   |    |          |    |   |    |          |    |  |  |                        |  |   |                                  |  |    |   |                              |  |    |   |